

Two ways to be Unique

Twice



WITH
eHD
Technology

@HD Technology

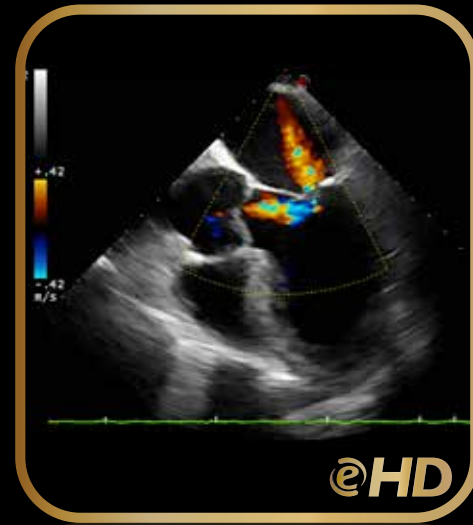


- Enhanced Diagnostic Value
- Maximizing Signal Information
- Low power consumption
- More efficient healthcare

eHD is the Esaote technology to innovate ultrasound imaging and improve the systems' use. It represents our attention to the diagnostic value, optimizing all the aspects of the chain a signal has to travel through, starting from the echo generated by the patient's body up to the arrival on the system's monitor. It maximizes the efficiency of ultrasound scanning, leaving the sonographer free to concentrate on the patient.

The quality that improves
your diagnostic confidence.

A new era in ultrasound



@HD

@HD

@HD



Advanced technologies

- Latest Innovations
- Diagnostic Confidence
- Optimized workflow

Imaging Processing

Esaote offers many technologies for imaging enhancement. With TEI the harmonic signal is fully preserved without degradation of the acoustic information. MView and XView improve the quality of the ultrasound images by reducing the presence of artifacts, shadowing and speckle.

Raw data post-processing

It allows the post-processing of images and video clips previously acquired and saved into the archive. This feature is very helpful in the clinical workflow and provides the physicians with image optimization and precise measurement even in the off-line stage. As a result, Raw data management brings to users' comfort as well as improved productivity and clinical outcomes.

XFlow Doppler

Extraordinary flow sensitivity and spatial resolution

XFlow provides direct visualization of blood echoes, extending the wideband

resolution, high frame rates and wide dynamic range of blood flow. The result is unbelievable spatial, temporal and contrast resolution in blood-flow display, which improves diagnostic confidence in the evaluation of complex hemodynamics, permits earlier detection of peripheral vascular disease, and providing more clinical information than other imaging modalities.

CnTI™

Contrast Tuned Imaging

Esaote's proprietary CnTI™ (Contrast Tuned Imaging) provides high performance contrast enhanced ultrasound imaging with second-generation contrast media. Intermittent and real-time low-MI modalities give optimal results in left ventricle opacification (LVO) and myocardial perfusion analysis, both in rest and stress examinations.

elaXto

Further step towards tissue characterization

Non-invasive method to support the physician in assessing tissue elasticity. The differences in tissue responses are detected and visualized in real-time by the elaXto processing algorithms through different graphical representations.

for every clinical need

X4D X3D

Esaote's volumetric technology takes full advantage of the touch panel to optimize workflow and ease of use, and represents a breakthrough in technology.

Virtual Biopsy

Advanced Biopsy also in very difficult approaches

The Virtual Biopsy allows to follow percutaneous procedure superimposing the needle tracking information on the real-time ultrasound image. The main advantage is to get evidence of needle path in order to choose the suitable trajectory and assess the needle position once it is in the patient body. Virtual Biopsy makes possible to perform percutaneous procedure also in very difficult-to-approach body districts (e.g. lung biopsies) or cases (e.g. low echogenic or fatty patient).

Fusion Imaging

All the benefits of different modalities in the same exam

Fusion imaging applied to US enhances the information produced by an Ultrasound Scanner thanks to the combination with a second imaging modality (CT, MR, PET or 3D US) in

real-time. Virtual Navigator is Esaote's technology that supports Fusion Imaging in order to increase accuracy, gain confidence, propose a different point of view in evaluating the second modality, support in difficult-to-scan patients and reduce procedure time.

XStrain4D

XStrain™ is a non-invasive tool to better investigate the myocardial function and explore and quantify aspects of the heart's physiology which were not possible to detect and quantify with previous ultrasound technologies.



Innovation and Accuracy in Vascular Imaging

The measurements that are based on beyond state of the art RF-data technology, are real-time, accurate and provide measurement quality indicators overlaid on the B-mode ultrasound image. It makes it possible to measure automatically and accurately the positions of the anterior and posterior blood vessel wall, providing blood vessel wall diameter, change in diameter and blood vessel wall thickness of an artery as a continuous function of time.

iQProbes

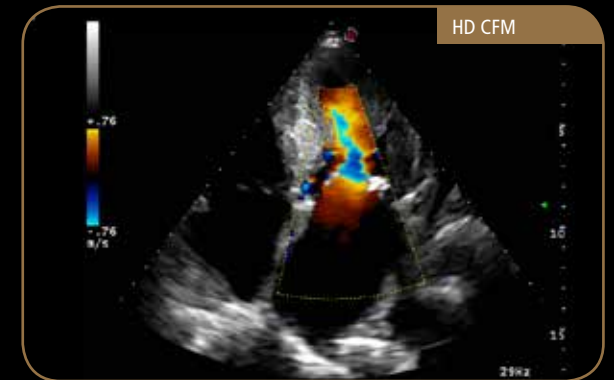
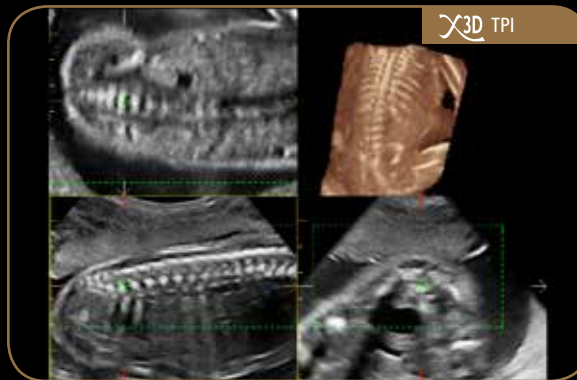
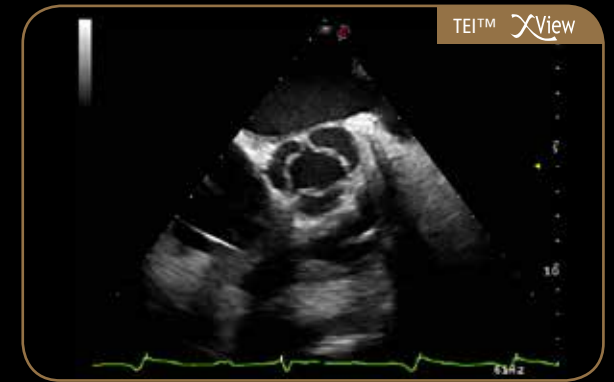
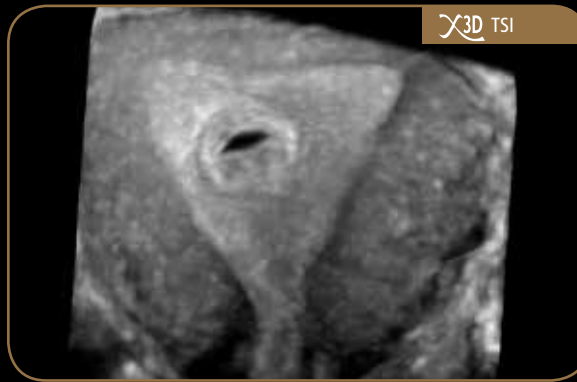
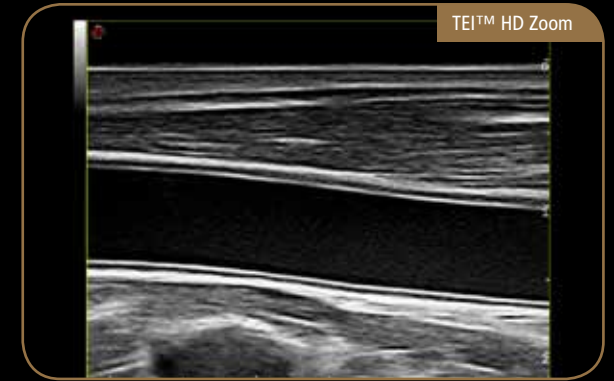
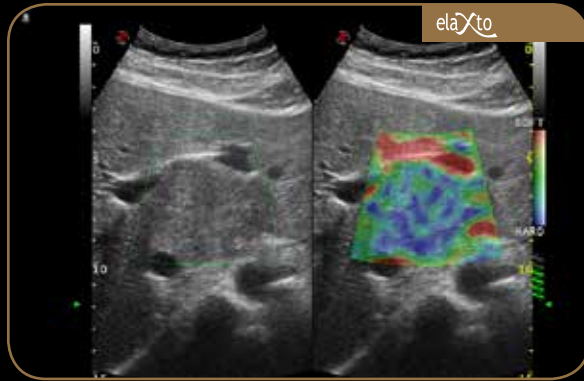

MyLab™ Twice

The transducer is the first element which connects with the patient's body. It delivers the ultrasound beam and receives the backscattered echo; its technology is extremely important to obtain a high signal to noise ratio, a sharp signal to optimize.

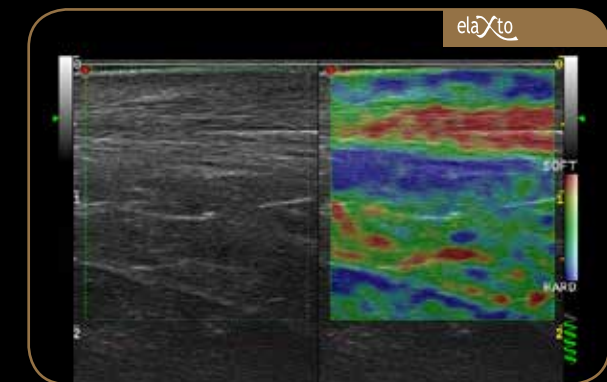
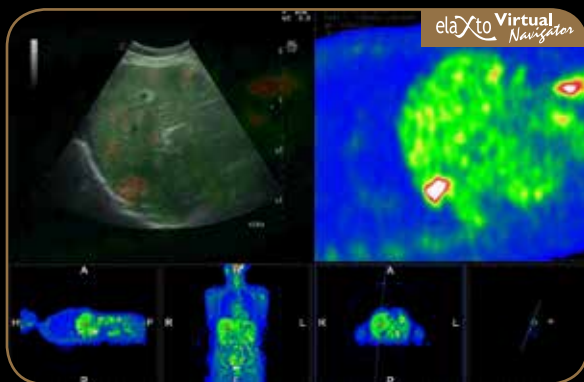
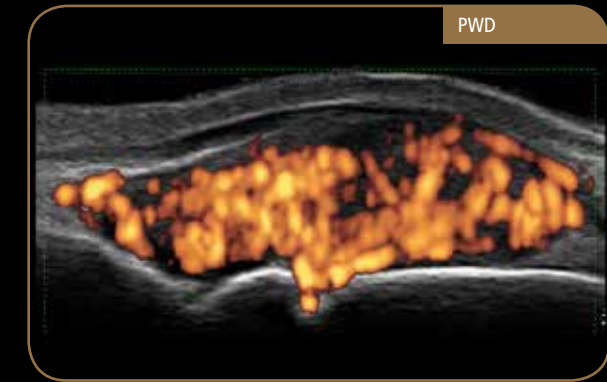
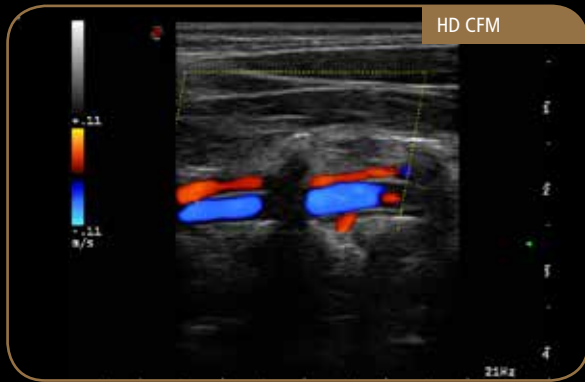
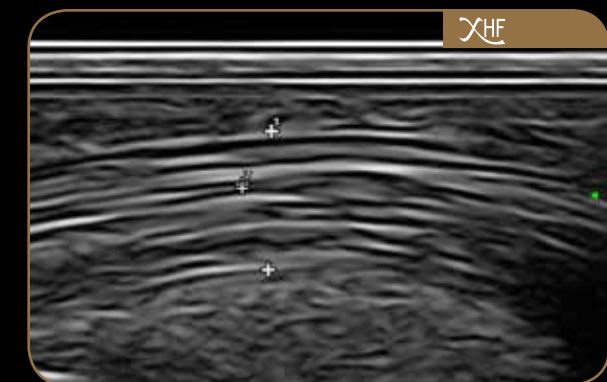
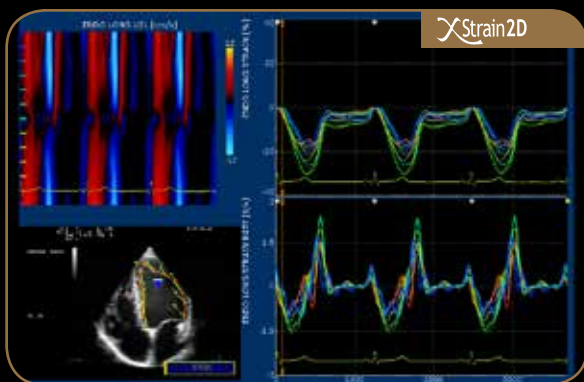
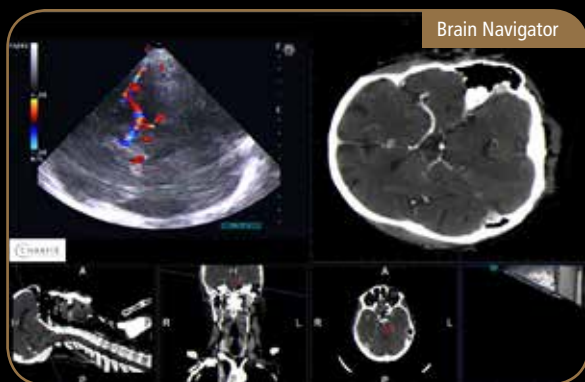




Exclusive Premium Performance



MyLabTwice



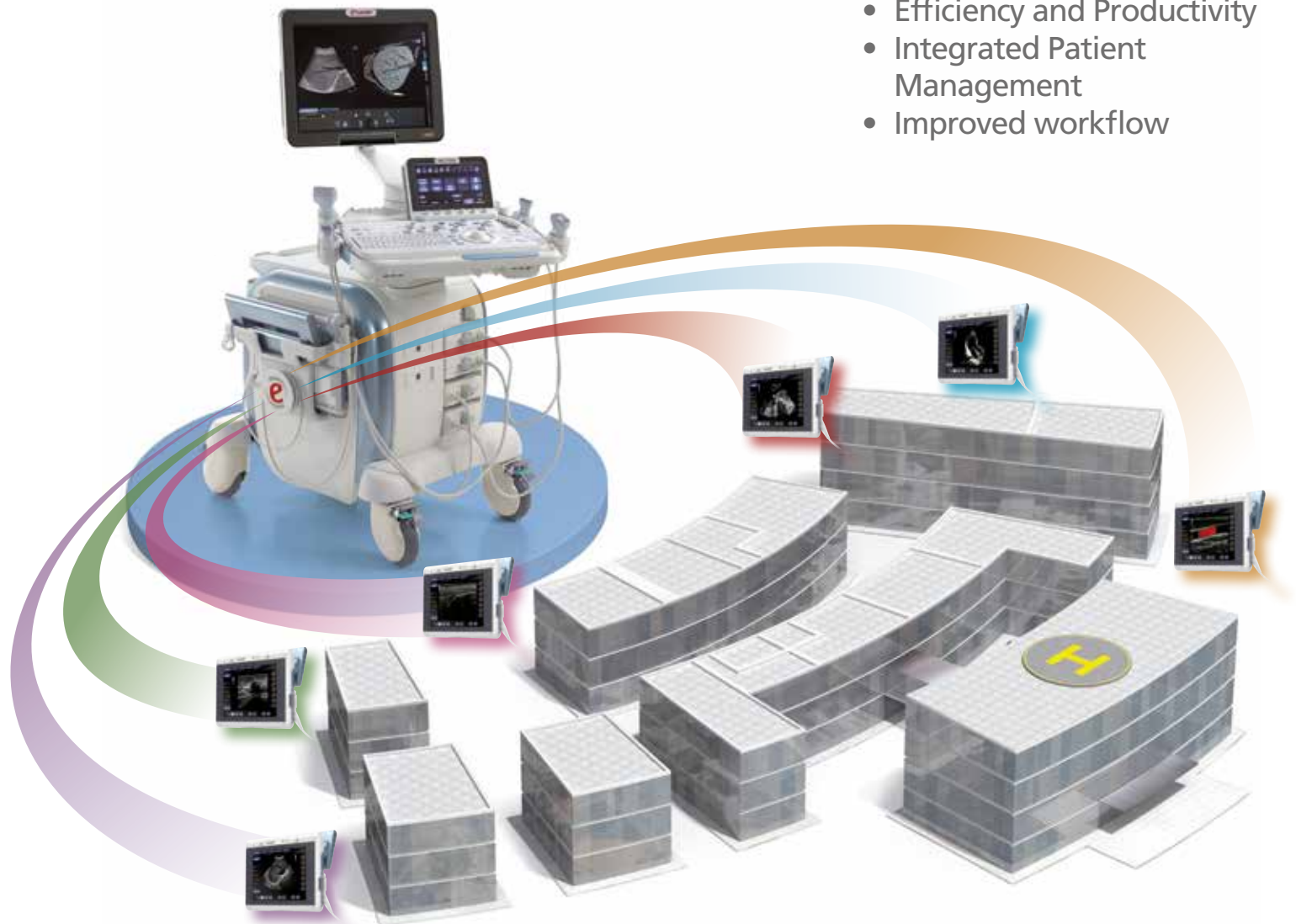
Premium Performance

The unique MyLabTwice concept allows physicians to seamlessly integrate results from point-of-care exam with imaging from the standard workflow. The MyLabSat point-of-care unit moves to wherever it is needed, for faster diagnosis and improved patient care.

The integration of all clinical information will surely provide an improved workflow, providing better and safer diagnostic services.

MyLab™Twice

- Efficiency and Productivity
- Integrated Patient Management
- Improved workflow



and Point-of-Care Ultrasound



Radiology (Breast, MSK)
Surgical
Emergency Medicine,
Interventional Radiology



Internal Medicine,
Gastroenterology
Oncology



Rheumatology
Endocrinology



Ob/Gyn
Urology



Cardiology
Anaesthesiology
Critical Care/ICU



Vascular
Pediatrics

MyLabSat

- Intuitive touch screen
- Fast
- Built-in Transducer Controls

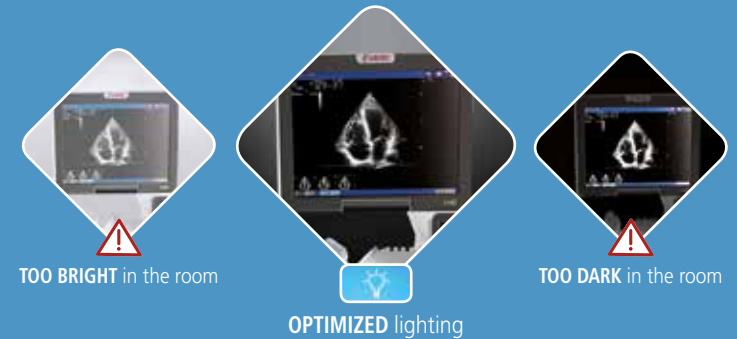


Ergonomics and Comfort in daily practice

- Intuitive interface
- High-quality touch screen
- Full ergonomics
- Compact system

Opti-Light

Optimal lighting has always been a crucial factor for ultrasound imaging. The latest Technology of wide LCD 19" monitor allows images to be clearly visualized in any situation. In addition, MyLabTwice introduces a further and unique feature: Opti-Light, the possibility to control the lighting room level directly from the touch screen. Once again, one step ahead in users' comfort and patient care.



Easy Networking for integrated Patient Management

MyLab™Twice

- Wireless technology
- Easy connectivity
- Data integration
- Accurate Patient Management



The new app to visualize images and videos on mobile devices

MyLab App



MyLab™Twice

Two ways to be Unique

WITH
eHD
Technology



Esaote S.p.A.
Via di Caciolle, 15 50127 Florence, Italy, Tel. +39 055 4229 1, Fax +39 055 4229 208, international.sales@esaote.com
Via A. Siffredi, 58 16153 Genoa, Italy, Tel. +39 010 6547 1, Fax +39 010 6547 275, info@esaote.com

FRANCE
Esaote France S.A.R.L.
ZA du Bel Air
10, rue de Témara, 78105 Saint Germain en Laye
Tel. +33 1 8204 8900, Fax +33 1 3061 7210
info@esaote.fr

GERMANY
Esaote Biomedica Deutschland GmbH
Max-Planck-Straße 27a
50858 Köln
Tel. +49 2234 688 5600, Fax +49 2234 967 9628
info@esaote.de

SPAIN
Esaote España S.A.
C/. Pont Reixat, 5
08960 Sant Just Desvern, Barcelona
Tel. +34 93 473 2090, Fax +34 93 473 2042
info@esaote.es

THE NETHERLANDS AND BELGIUM
Esaote Benelux B.V.
Philipsweg 1
6227 AJ Maastricht
Tel. +31 43 3824650, Fax +31 43 3824651
benelux@esaote.nl

UK
Esaote UK
14, Cambridge Science Park
Milton Road, Cambridge, CB4 0FQ
Tel. + 44 1223 424499, Fax + 44 709 288 0231
infoUK@esaote.com

NORTH AMERICA
Esaote North America
8000 Castleway Drive,
Indianapolis, IN 46250
Tel. +1 317 813 6000, Fax +1 317 813 6600
inquire@esaoteusa.com

BRASIL
Esaote Healthcare do Brasil
Rua Geraldo Flausingo Gomes, 78
CEP: 04575-060 São Paulo - SP
Tel. +55 11 2789-0400 Fax +55 11 2789-0432
comercial@esaote.com.br

ARGENTINA
Esaote Latinoamérica S.A.
San Martín 551, Cuerpo 'C', Piso 8, (C1004AAK) Buenos Aires
Tel. +54 11 4326 1832, Fax: +54 11 4328 1245
info@esaote.com.ar

INDIA
Esaote Asia Pacific Diagnostic Private Limited
DLF IT Park, A - 44 & 45, Tower- C, Ground Floor,
Sector- 62, Noida, Uttar Pradesh, India
Pin Code: 201 301
Tel. +91 120 4732444, Fax +91 120 4750148
info@esaote.in

HONG KONG AND FAR EAST
Esaote China Ltd
18/F, 135 Bonham Strand Trade Centre,
135 Bonham Strand, Sheung Wan, Hong Kong
Tel. +852 2545 8386, Fax +852 2543 3068
esaote@esaotechina.com

CHINA
Esaote Shenzhen Medical Equipment
Room 2608, Tower B
Beijing Global Trade Center
36 North Third Ring Road East,
Dongcheng District, 100013, Beijing
Tel. +86 010 58257766, Fax +86 010 52257760

RUSSIAN FEDERATION AND CIS
Esaote S.p.A.
18 Leningradsky prospekt
Off. 5 and 6, Moscow 125040
Tel. +7 495 232 0205, Fax +7 495 232 1833
esaotemoscow@yandex.ru

Technology and features are system/configuration dependent. Specifications subject to change without notice. Information might refer to products or modalities not yet approved in all countries. For further details, please contact your Esaote sales representative.
CnTI™: The use of Contrast Agents in the USA is limited by FDA to the Left Ventricle opacification and visualization of the Left ventricle endocardial border.
ElaXto quantification and ¹⁸FQAS, are not available for sales in the USA.

