

Top Performance in Action

Alpha



WITH
eHD
Technology

"Never confuse movement with action"
Ernest Hemingway

@HD Technology

- Enhanced Diagnostic Value
- Maximizing Signal Information
- Low power consumption
- More efficient healthcare

@HD

iQ Probes



@HD
Pulser



@HD
Processing



@HD
Doppler



@HD

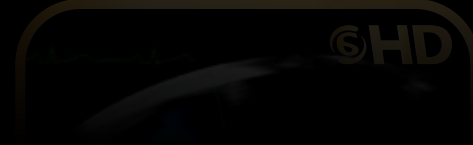
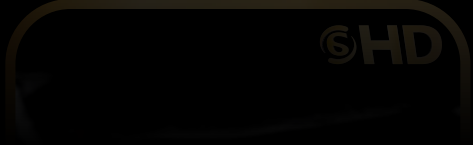
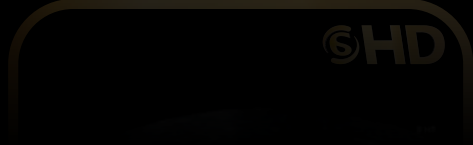
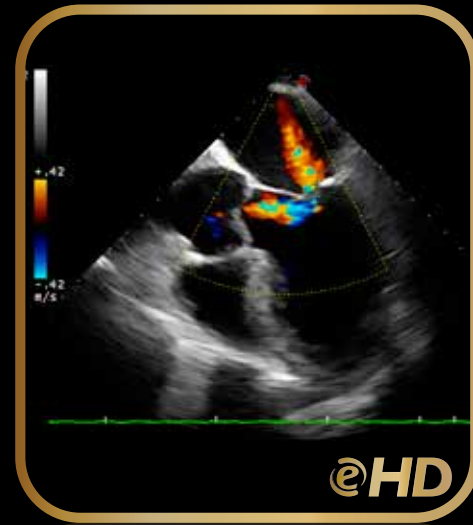
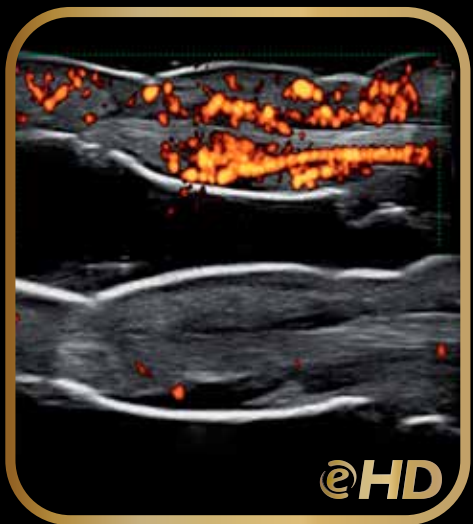


eHD is the Esaote technology to innovate ultrasound imaging and improve the systems' use.

It represents our attention to the diagnostic value, optimizing all the aspects of the chain a signal has to travel through, starting from the echo generated by the patient's body up to the arrival on the system's monitor. It maximizes the efficiency of ultrasound scanning, leaving the sonographer free to concentrate on the patient.

The quality that improves your diagnostic confidence.

A new era in ultrasound





iQ Probes

- Active Matrix Composite Material
- Multiple Adaptive Layers
- Bi-Con Geometric Lens
- Heating Efficiency Control

MyLabAlpha offers a wide range of iQ Probes

In addition to convex, linear and phased array, several special probes (such as endocavity, trans esophageal, intraoperative, volumetric, etc.) can be connected.



Appleprobe

an innovative approach in ergonomics

Appleprobe keeps hand and wrist in their natural alignment distributing the grip throughout the whole hand as One grips an apple. You can relieve tension on the fingers and the wrist, when not scanning, simply by keeping the probe between the fingers.

The appleprobe has been designed for both grip:

- innovative palm hold
- conventional pincer hold



Top Performance Ultrasound, anytime and anywhere

MyLabAlpha has been designed to deliver top performances and high dynamism in a very reduced size and weight.

Thanks to the eHD technology this system provides fast, optimized data transfer, which leads to an improved user comfort and clinical outcome as well as department throughput and competence.



@Touch

A standard ultrasound system becomes a personal application-specific diagnostic tool.

Customized settings and multiple functions can be organized according to clinical practice and preferences and then easily recalled by just pressing a button.



Unparalleled throughput

The intelligent software and large sized touch-screen allow unique features to be delivered with MyLabAlpha. The Productivity-Oriented Platform is the core of the architecture: easy access, customized settings and functions, standardized clinical protocols and immediate settings.

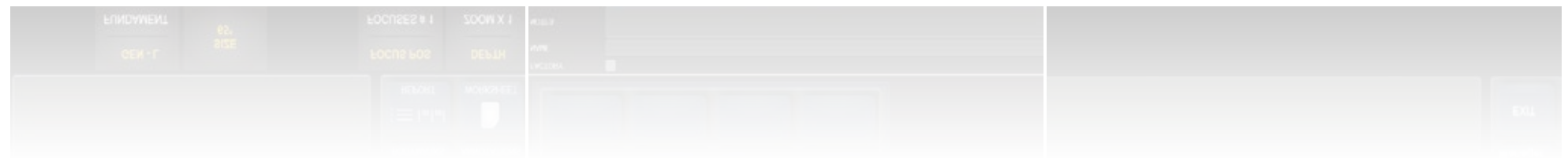
@Touch

By pressing the @Touch button, the user can display the controls and functions that he really needs in clinical practice: improved comfort and reduced examination time.

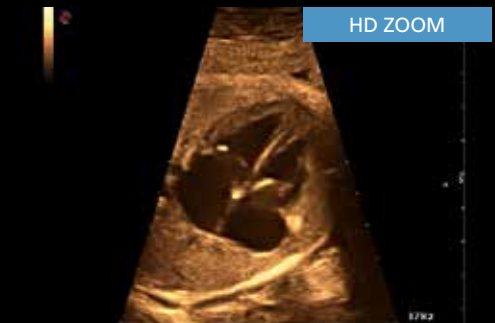
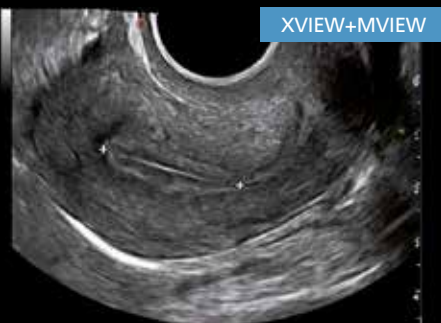
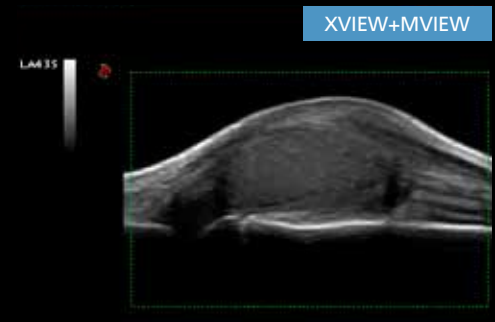
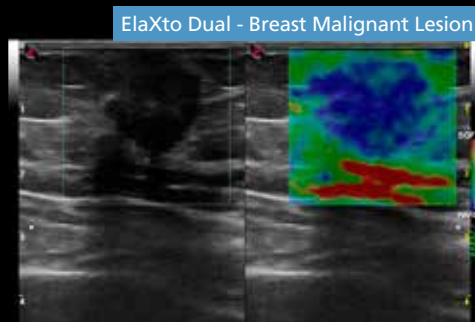
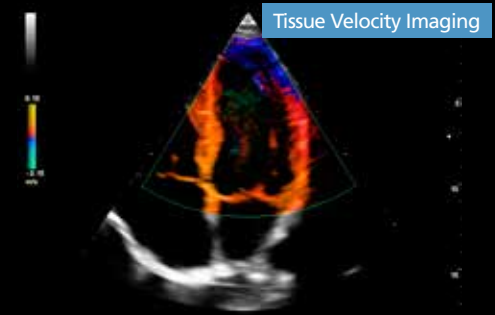
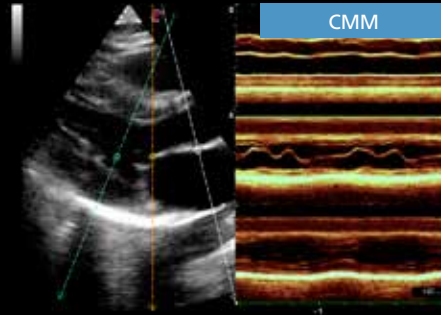
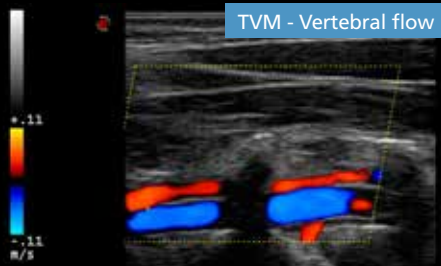
@Touch dedicated session allows the user to record different macros. Based on any single user's needs and preferences, multiple functions can be included with just one touch: less keystrokes and faster diagnosis.

SmartTouch

Wide ranging image settings, user preferences and clinical targets, normally require time and attention. Smart-touch delivers dedicated settings for any anatomical district. Optimal images are displayed with just one touch.



Exclusive Premium Performance



Never Seen on a Portable System

The powerful MyLabAlpha platform delivers features and performance never seen on a portable system, to deliver reliable diagnosis at the point-of-care and portability without compromises.

Xstrain 4D

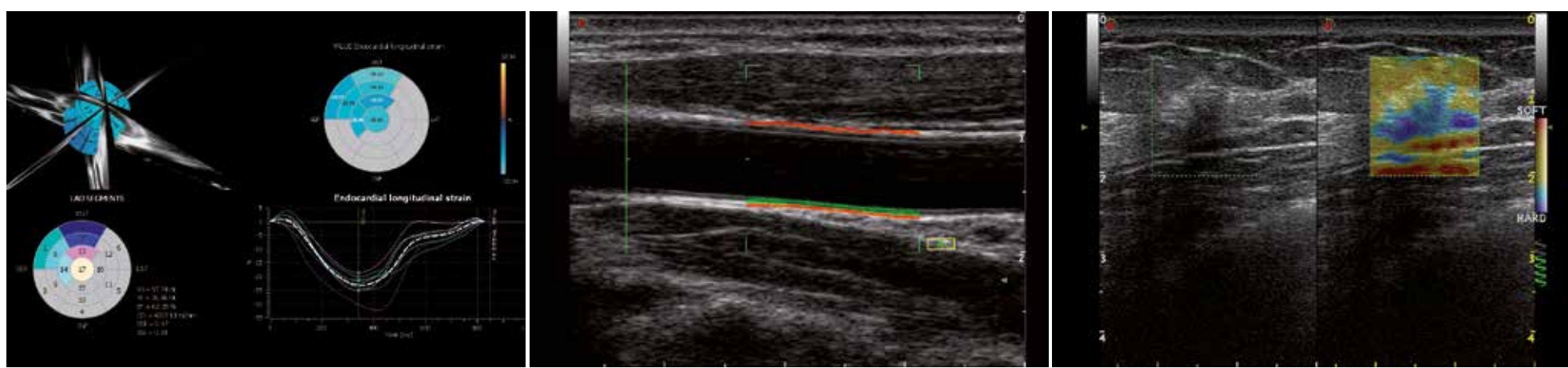
By combining XStrain analysis of standard apical views (2Ch, 4Ch, ALAX), **XStrain 4D** provides complete volumetric assessment of left ventricle. Global and regional curves as well as strain/strain-rate and volume measurements may be easily and quickly displayed.

^{RF}QIMT-QAS

^{RF}QIMT (Quality Intima Media Thickness) and **^{RF}QAS** (Quality Arterial Stiffness) are based on the innovative Esaote's RF-data technology. Accuracy, ease of use, real-time feedback, graphs and report are part of this innovative package for early-diagnosis clinical practice.

ElaXto

ElaXto is a non-invasive method to support the physician in assessing tissue elasticity. The differences in tissue responses are detected and visualized in real-time to help the physicians in the daily clinical routine. iQ Probes' high sensitivity increases exam reproducibility and reduces operator dependence.



Flexibility

- Easy Portability
- Innovative “ready-to-go” solutions
- Comfortable workstations
- Wide range of accessories



Wireless Ultrasound

- Extended export capability to PC (Windows®, Mac®) and mobile devices (tablets, smart-phones, etc ...)
- Easy networking, standard and wireless
- DICOM and IHE compliance



The new app to visualize images and videos on mobile devices

Mylab App

MyLab[™]Alpha

Top Performance in Action

WITH
eHD
Technology

*“Never confuse movement with action”
Ernest Hemingway*

169 0078 00 (MA Rev. 03)



Windows[®] is a registered trademark of Microsoft Corporation
Mac[®] is a registered trademark of Apple Inc.



Esaote S.p.A.
Via di Caciolle, 15 50127 Florence, Italy, Tel. +39 055 4229 1, Fax +39 055 4229 208, international.sales@esaote.com
Via A. Siffredi, 58 16153 Genoa, Italy, Tel. +39 010 6547 1, Fax +39 010 6547 275, info@esaote.com

FRANCE
Esaote France S.A.R.L.
ZA du Bel Air
10, rue de Témara, 78105 Saint Germain en Laye
Tel. +33 1 8204 8900, Fax +33 1 3061 7210
info@esaote.fr

GERMANY
Esaote Biomedica Deutschland GmbH
Max-Planck-Straße 27a
50858 Köln
Tel. +49 2234 688 5600, Fax +49 2234 967 9628
info@esaote.de

SPAIN
Esaote España S.A.
C/. Pont Reixat, 5
08960 Sant Just Desvern, Barcelona
Tel. +34 93 473 2090, Fax +34 93 473 2042
info@esaote.es

THE NETHERLANDS AND BELGIUM
Esaote Benelux B.V.
Philipsweg 1
6227 AJ Maastricht
Tel. +31 43 3824650, Fax +31 43 3824651
benelux@esaote.nl

UK
Esaote UK
14, Cambridge Science Park
Milton Road, Cambridge, CB4 0FQ
Tel. + 44 1223 424499, Fax + 44 709 288 0231
infoUK@esaote.com

NORTH AMERICA
Esaote North America
8000 Castleway Drive,
Indianapolis, IN 46250
Tel. +1 317 813 6000, Fax +1 317 813 6600
inquire@esaoteusa.com

BRASIL
Brazilian Direct Office
Rua Tomas Carvalhal, 711
04006-001 São Paulo SP
Tel. +55 11 2589 0533 Fax +55 11 2589 0527
leonardo.pili@esaote.com.br

ARGENTINA
Esaote Latinoamérica S.A.
San Martín 551, Cuerpo 'C', Piso 8, (C1004AAK) Buenos Aires
Tel. +54 11 4326 1832, Fax: +54 11 4328 1245
info@esaote.com.ar

INDIA
Esaote Asia Pacific Diagnostic Private Limited
DLF IT Park, A - 44 & 45, Tower- C, Ground Floor,
Sector- 62, Noida, Uttar Pradesh, India
Pin Code: 201 301
Tel. +91 120 4732444, Fax +91 120 4750148
info@esaote.in

HONG KONG AND FAR EAST
Esaote China Ltd
18/F, 135 Bonham Strand Trade Centre,
135 Bonham Strand, Sheung Wan, Hong Kong
Tel. +852 2545 8386, Fax +852 2543 3068
esaote@esaotechina.com

CHINA
Esaote Shenzhen Medical Equipment
Room 2608, Tower B
Beijing Global Trade Center
36 North Third Ring Road East,
Dongcheng District, 100013, Beijing
Tel. +86 010 58257766, Fax +86 010 52257760

RUSSIAN FEDERATION AND CIS
Esaote S.p.A.
18 Leningradsky prospekt
Off. 5 and 6, Moscow 125040
Tel. +7 495 232 0205, Fax +7 495 232 1833
esaotemoscow@yandex.ru

Technology and features are system/configuration dependent.
Specifications subject to change without notice. Information might refer to products or modalities not yet approved in all countries.
For further details, please contact your Esaote sales representative.

